

# Tunable Particles for Cell Delivery

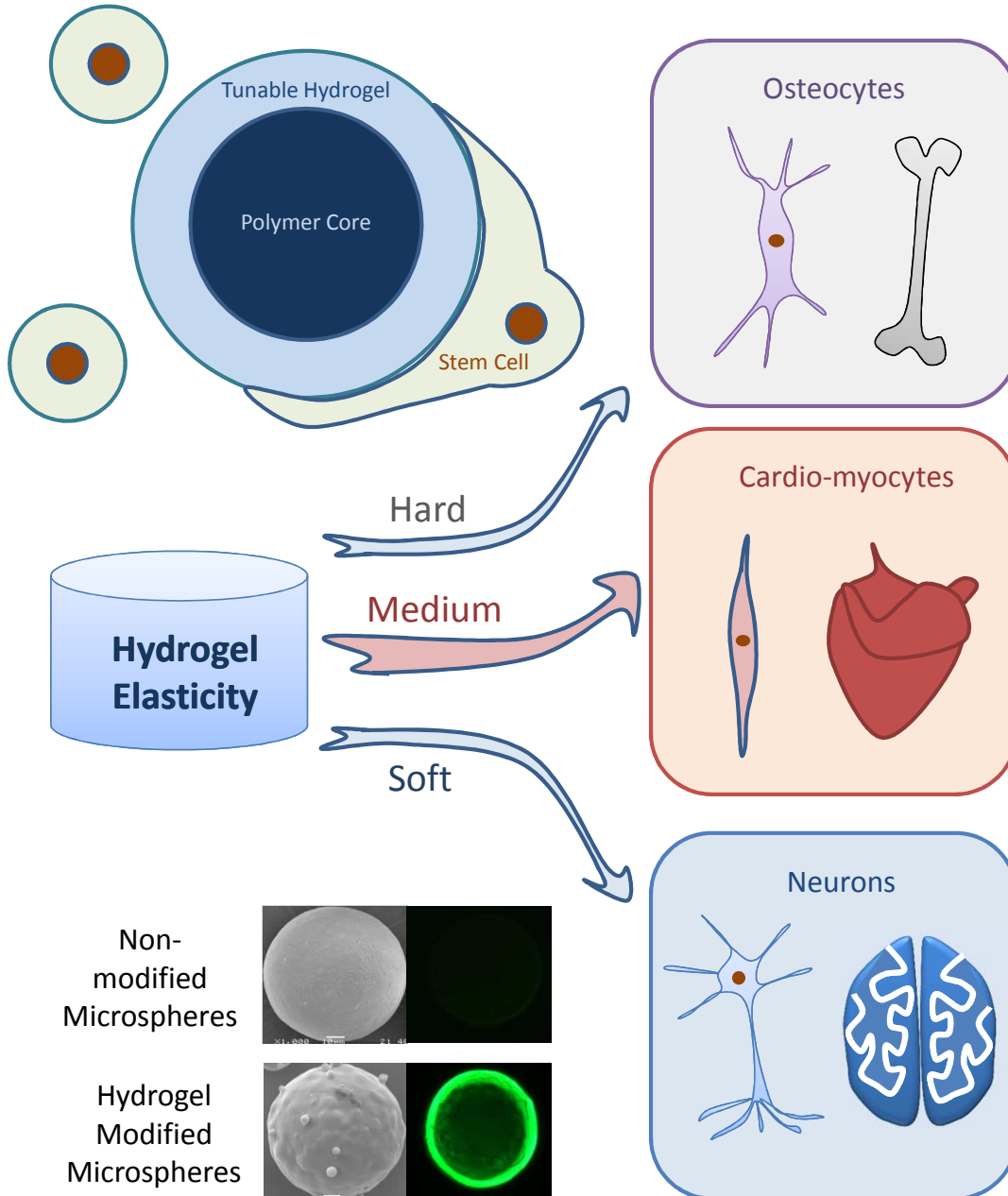


UK Regenerative  
Medicine Platform

Presented by:

*Abdulrahman Baki*

paxab12@nottingham.ac.uk



## What is it?

Surface modified particles which can be tuned to mimic the mechanical properties of a specific tissue

## Strengths

- Control over stem cell differentiation
- Non-invasive injectable system

## Weaknesses

- Limited to simple tissues therapy (e.g. Bone, Cartilage)

## Potential Applications

- Tunable porous microspheres
- Tissue lesion repair (e.g. spinal cord injuries)
- 3D printing into complex tissue structures