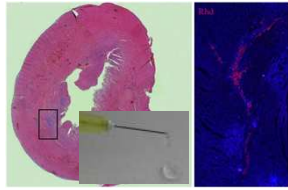
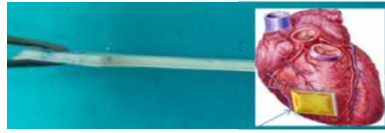


Self-Assembling Functional β -sheet Hydrogels: VKVKVEVK

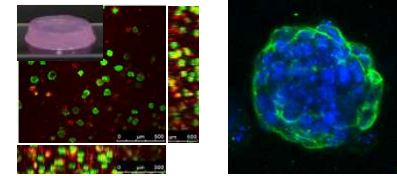
Patrick.King@Manchester.ac.uk (Prof. Aline Miller)



Injectable hydrogels for cell delivery



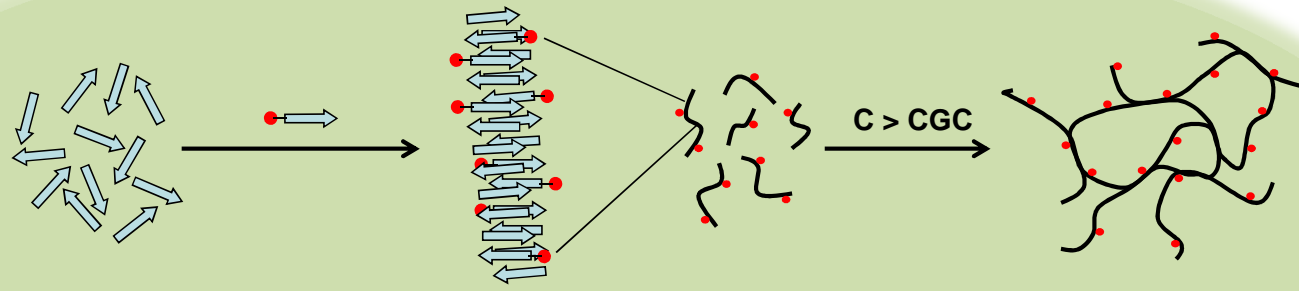
Hydrogels for a cardiac patch



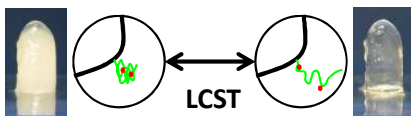
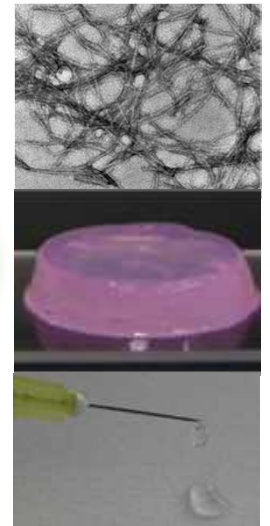
Hydrogels for (stem) cell culture



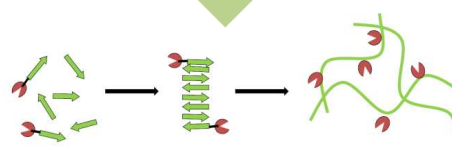
Self-assembling peptide fibres that form stiff hydrogels at sufficient concentration. β -sheet hydrogels are robust, self-healing and readily accommodate peptide-cargo.



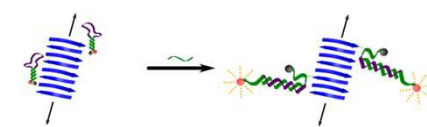
→ β -sheet forming peptide
 ● → functionalised peptide
● Cargo: biologically active peptide sequence, drug, polymer



Responsive hydrogels for controlled and sustained drug delivery



Hydrogel-immobilized enzymes: cascade reactions in non-ideal conditions



Functionalised hydrogels as biosensors