

Enhancing cell therapy in liver disease

Presented by: Andrew Owen & Phil Newsome



UK Regenerative
Medicine Platform

What is it?

Two principal hurdles are:

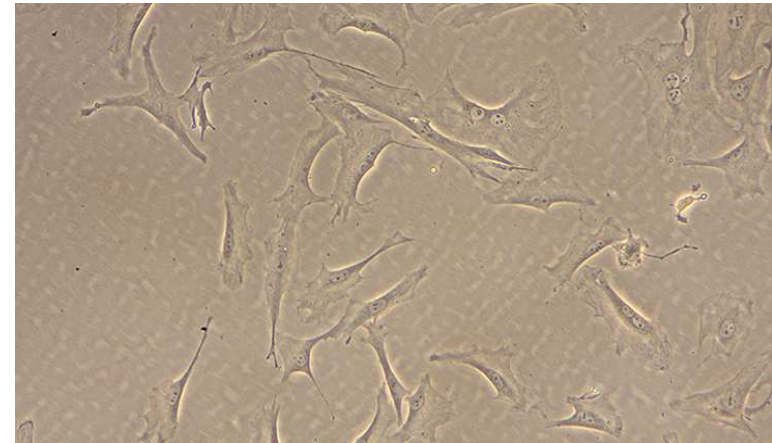
1. Efficient delivery of cells to area of need
2. Prolonging viability and functionality of cells after delivery

How do you propose to tackle this?

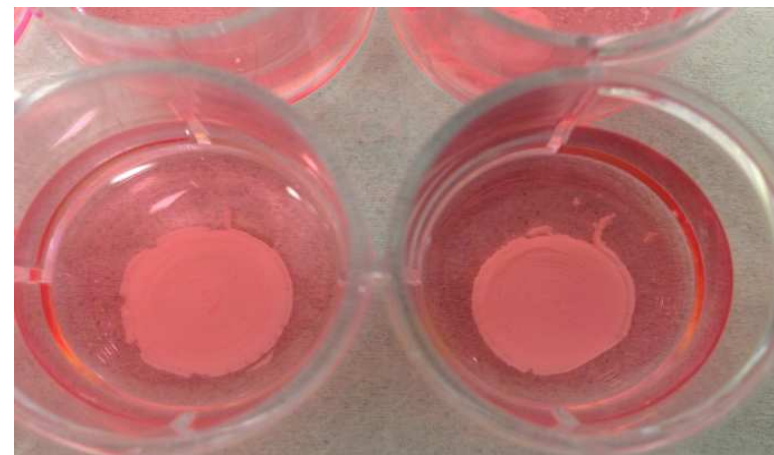
Use of a thermo-reversible polymer which gels on injection and encapsulates cells prolonging their survival *in vivo*

Difficult Challenges

Maintenance of formed gel over a range of temperatures



PaS MSC grown in standard media



MSC encapsulated in vitro