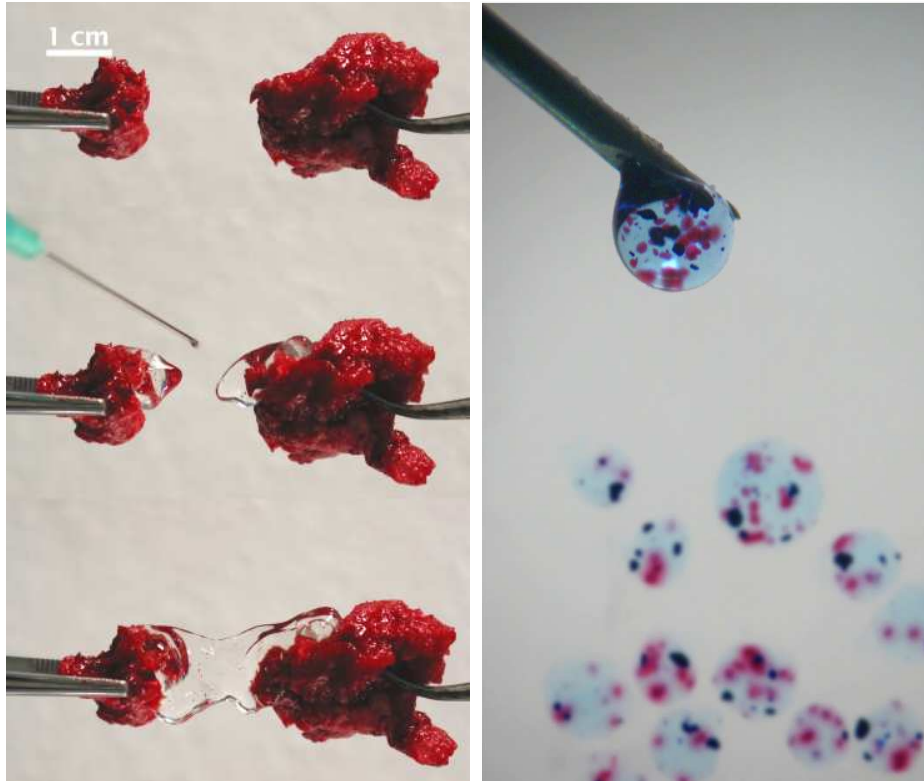


Clay gels for protein binding

Presented by: Jon Dawson, jid@soton.ac.uk



UK Regenerative
Medicine Platform



Self-gelling clay nanoparticles for regenerative microenvironments

What is it?

Injectable hydrogel based on clay nanoparticles for cell and growth factor delivery.

Strengths

Clay nanoparticles self-organise into gels under physiological conditions and bind growth factors to control their effect in space and time.

Weaknesses

Mechanically weak. Non-specific protein binding

Potential Applications

Have achieved localised stimulation of blood vessel invasion and bone formation. Good for any application where spatial and temporal control of regenerative molecules is desirable!